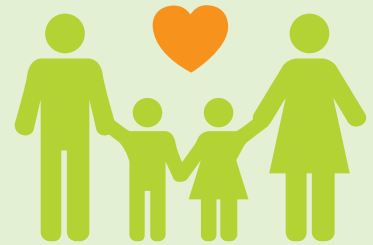


2020  
COST OF LIVING  
INITIATIVE

# Helping ALICE® Thrive



## Who is ALICE®?

### Asset Limited, Income Constrained, Employed

Half of our individuals and families are struggling to make ends meet including paying for housing, food, and transportation

#### HAWAII'S HOUSEHOLD SURVIVAL BUDGET



**\$28,296**  
Single adult  
income



**\$77,052**  
Household income  
for a family of four

## ALICE®

lives in our communities,  
across our state and is  
**your family member,  
your neighbor,  
your co-worker.**

**1 out of 2**

Hawai'i  
households  
are ALICE®<sup>1</sup>

**This comprehensive legislative package of bills is the first critical step of a public-private partnership to help ALICE® families thrive in Hawai'i.**

<sup>1</sup> ALICE: A Study of Financial Hardship in Hawaii, Aloha United Way, 2018

## Access to Early Learning

### THE FACTS

- 54% or 20,000 keiki do not have access to early learning opportunities

### THE PATH FORWARD

#### HB2543

- Provide access to early learning through public and private delivery systems
- Create learning centers near places of employment

### THE IMPACT

- \$9,500 average annual cost of childcare now available to families for essential needs

## Building Schools for All

### THE FACTS

- 1 in 5 campuses are over 100 years old
- Over \$860M in repair and maintenance backlogs

### THE PATH FORWARD

#### SB3103

- Create a new School Facilities Agency
- Expedite building and design of outstanding schools by leveraging underutilized school lands

### THE IMPACT

- Modern schools that increase a student's academic and personal success

# 2020 COST OF LIVING INITIATIVE



## Helping Working Families

### THE FACTS

- 7 out of 10 adults are not financially healthy
- 48% of households are ALICE

### THE PATH FORWARD

#### HB2541

- Provide refundable Earned Income Tax Credits and increase food/excise tax credits by 36%
- Increase the minimum wage from \$10.10 to \$13 by 2024

### THE IMPACT

- Over \$70M in annual tax relief
- Over \$6,000 annual income increase for a full-time worker

# HELPING ALICE<sup>®</sup> THRIVE

## Increase Affordable Housing

### THE FACTS

- 50,000+ housing units are needed statewide by 2050
- 55% of rent-burdened households spend over 30% of monthly income on rent

### THE PATH FORWARD

#### SB3104

- Invest \$275M for infrastructure and affordable housing
- Provide 99-year leases for multi-unit dwellings with 50% of units reserved for affordable housing

### THE IMPACT

- Access to long-term affordable homes for multiple generations